

HEAT EXCHANGERS
FOR REFRIGERATING
AND HEATING INDUSTRY

www.gtbgroupp.cz

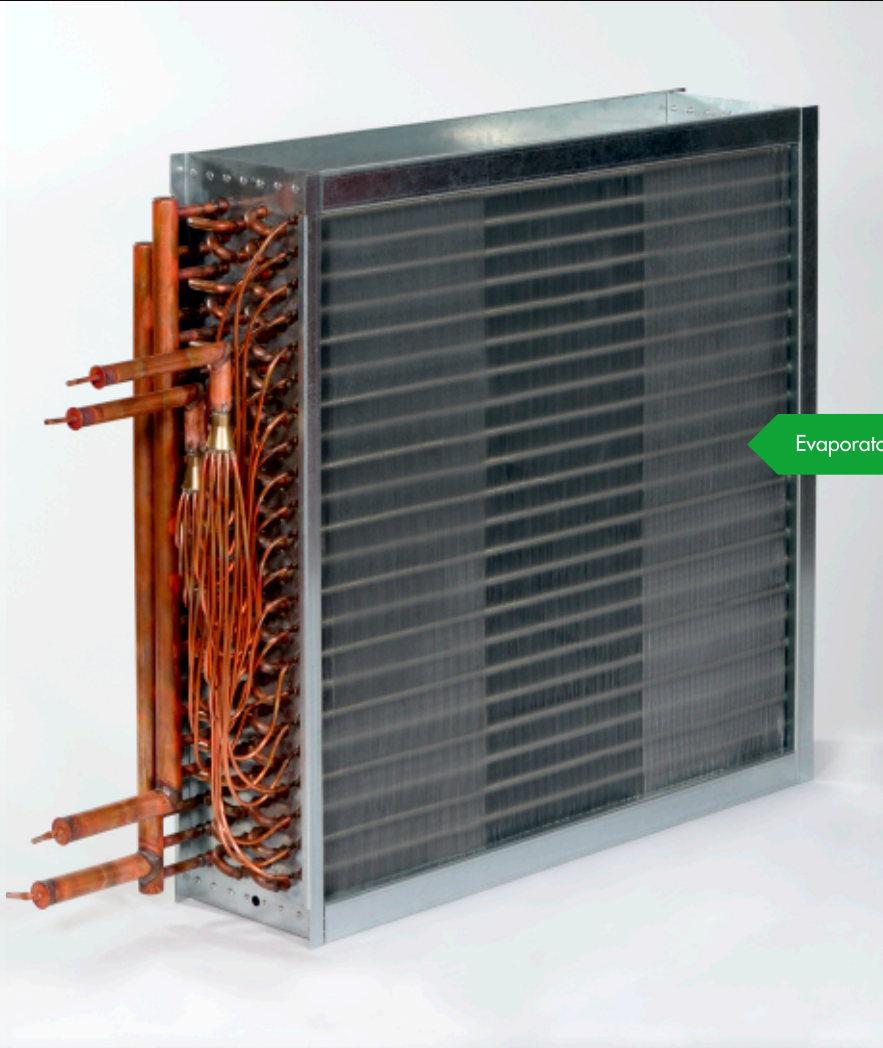
COILS

HEAT AND COOL FOR YOUR NEEDS

GTB group is specialized in the manufacturing and the design of heating & cooling coils, evaporators and condensers.

COILS

HEAT AND COOL FOR YOUR NEEDS



Evaporator

THE MAIN PRODUCTS ARE:

- Condensers
- Evaporators
- Monoblocks
- Air coolers
- Shaped copper tubes
- Dry coolers

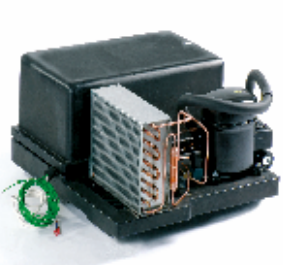
Our products are made by modern automated machines from Germany and Italy, therefore we are able to supply the products of the highest quality and value-in-use.

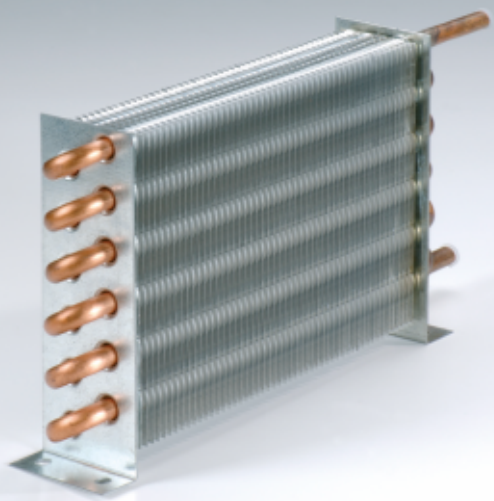
HEAT EXCHANGERS FOR REFRIGERATING AND HEATING INDUSTRY

Monoblock

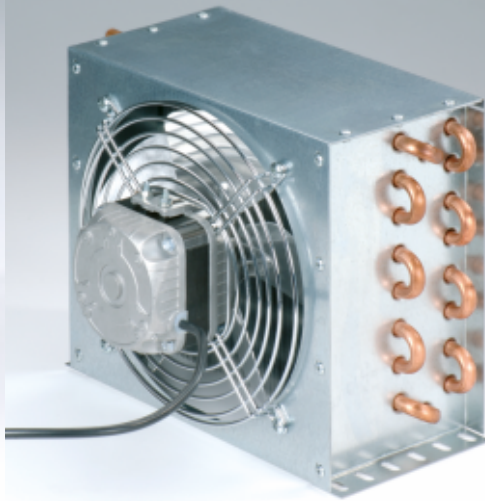
Nonstandard condensing units

Nonstandard cooling units

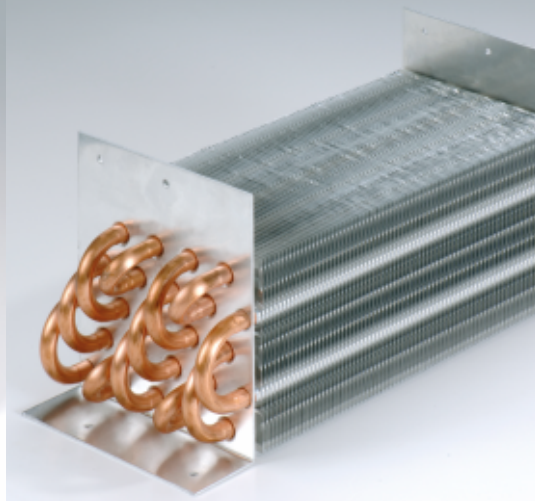




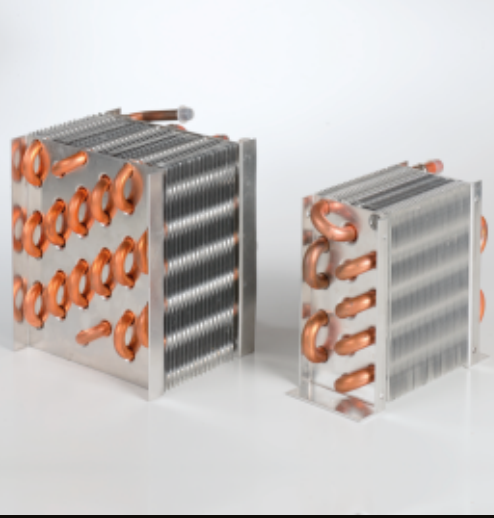
Condenser



Condenser with fan



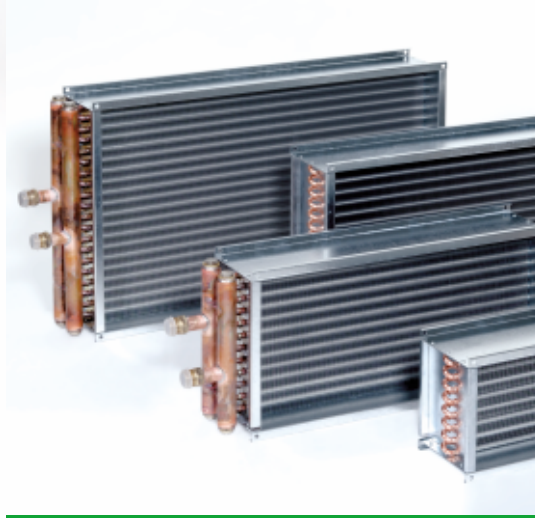
Evaporator



Small evaporators

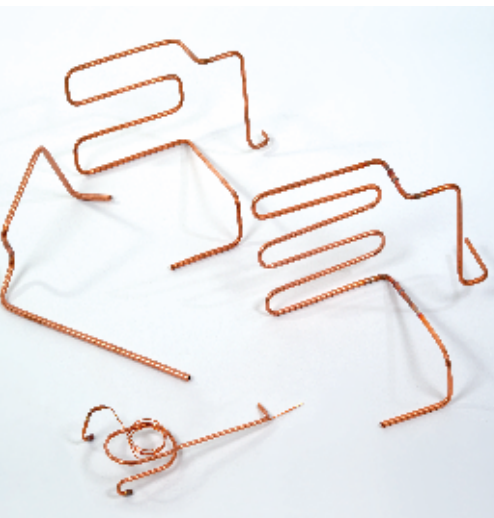


Evaporator painted

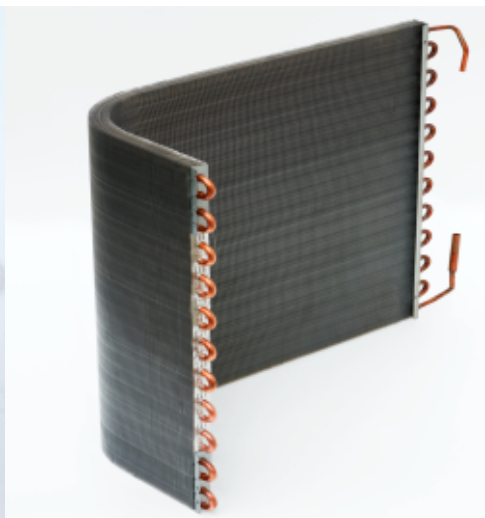


HVAC coils with headers

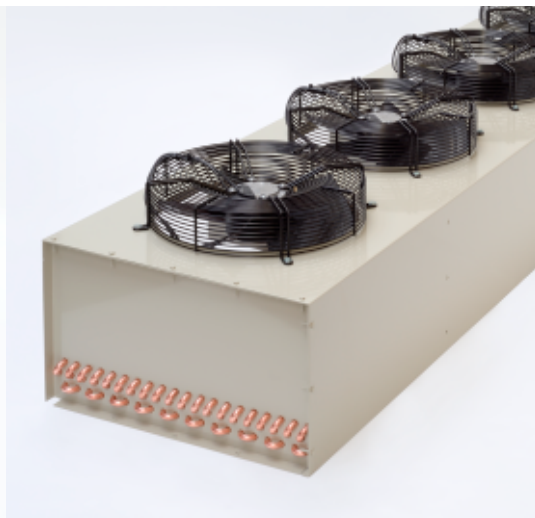
(COILS) HEAT EXCHANGERS...



Shaped copper tubes



Bended coil



Dry cooler

GENERAL INFORMATION

TUBES

In our production we use smooth and inner-grooved copper tubes in dimensions:

- ∅ 6,35 x 0,23 (inner-grooved)
- ∅ 7,94 x 0,3
- ∅ 9,52 x 0,3
- ∅ 12 x 0,35
- ∅ 12,7 x 0,35

FINS

Finned pack in standard version is made from aluminium foil. In case of special operating conditions fins could be made from: epoxy coating foil, copper foil or tinned copper foil or hydrophile aluminium.

FRAME

Frame is made from metal sheet (thickness from 1 to 3mm):

- Galvanized steel
- Aluminium
- Stainless steel

HEADERS

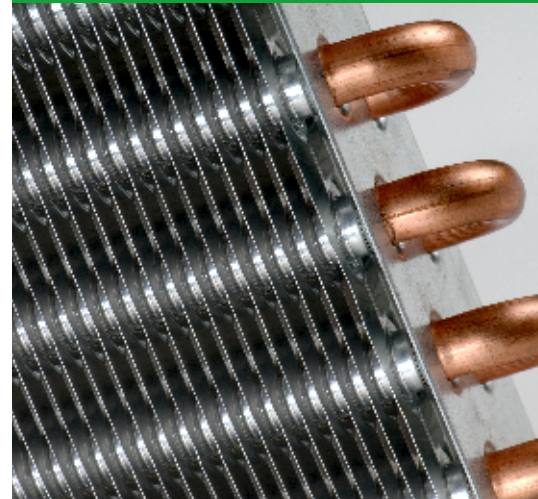
Headers are made from carbon steel or cooper. Connection could be threaded, smooth or with flanges. For evaporators we provide high quality distributors with capilars.

FINISHING

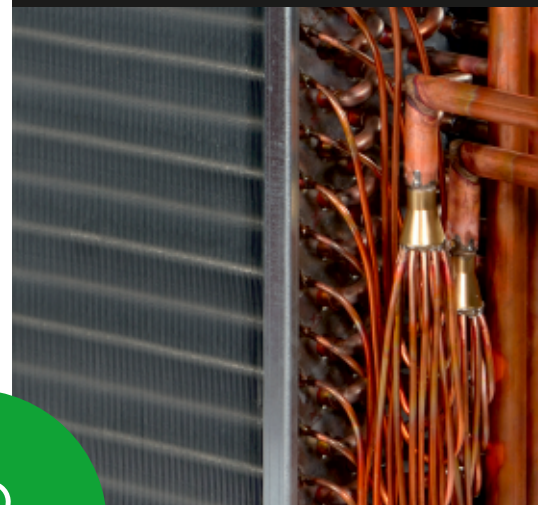
Finishing can include powder coating of heat exchangers or cataphoresis, or many other ways of protection.



Tubes



Fins



Headers

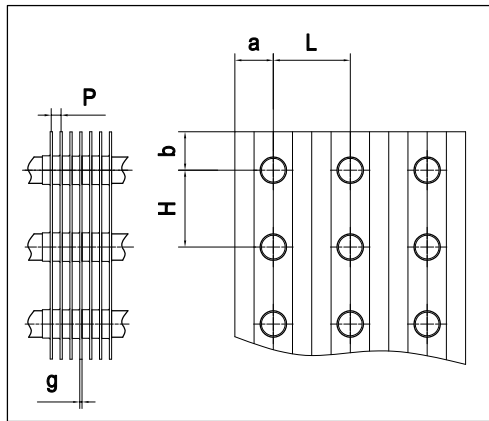
ISO
QUALITY



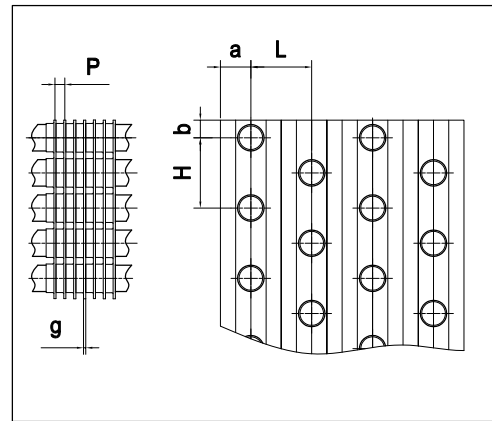
Frame and finishing

GEOMETRIES OF HEAT EXCHANGERS

INLINE GEOMETRY



STAGGERED GEOMETRY



Geometry type - STAGGERED

Tube	Geometry type	Fin style	H mm	L mm	a mm	b mm	Thickness of foil	Fin spacing *
							g [mm]	P [mm]
ø6.35x0.23	19x16.5	corrugated	19,00	16,50	8,25	4,75	0,15	1.0 - 5.0
ø7.94x0.3	25x21.65		25,00	21,65	10,83	6,25	0,15	1.0 - 5.0
ø9.52x0.3								
ø12x0.35	32x27.7		32,00	27,70	13,85	8,00	0,12	1.6 - 3.4
							0,20	3.5 - 7.0
ø12.7x0.35	35x30.31	35,00	30,31	15,16	8,75	0,12	1.6 - 3.4	
						0,20	3.5 - 7.0	

Geometry type - INLINE

Tube	Geometry type	Fin style	H mm	L mm	a mm	b mm	Thickness of foil	Fin spacing *
							g [mm]	P [mm]
ø12x0.35	35x35	corrugated	35,00	35,00	17,50	17,50	0,20	5.0 - 10.0
ø12.7x0.35	55x63.5	wave	55,00	63,50	31,75	27,50	0,20	5.0 - 10.0

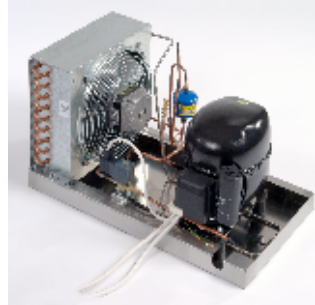
* other fin space available on request

Our wide range of geometries can help you find ideal solution for: small, medium and big condensers, drycoolers, unit coolers, heat recovery units, air heaters and low temperature evaporators.

Corrugated fins



LOW CAPACITY CONDENSERS



Condensing unit

FEATURES

TUBES:

- Copper tubes, diameter 9,52 mm (3/8") or 7,94 mm (5/16")
- Special version dedicated to R290 - tube 6,35 mm (1/4")

FINS:

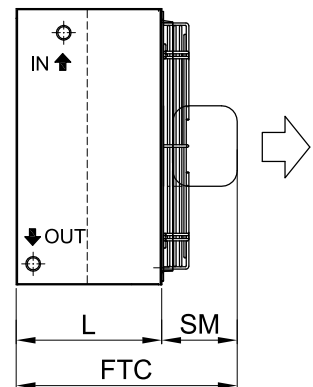
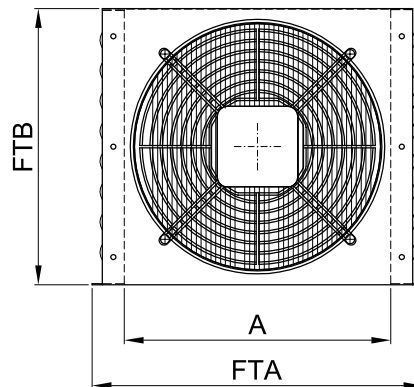
- Corrugated aluminium fins
- Standard fin spacing 3,0 mm (other available on request)
- Staggered geometry 25 x 21,65
- Special version with tube 1/4" - staggered geometry 19 x 16,5 mm

FAN MOTORS:

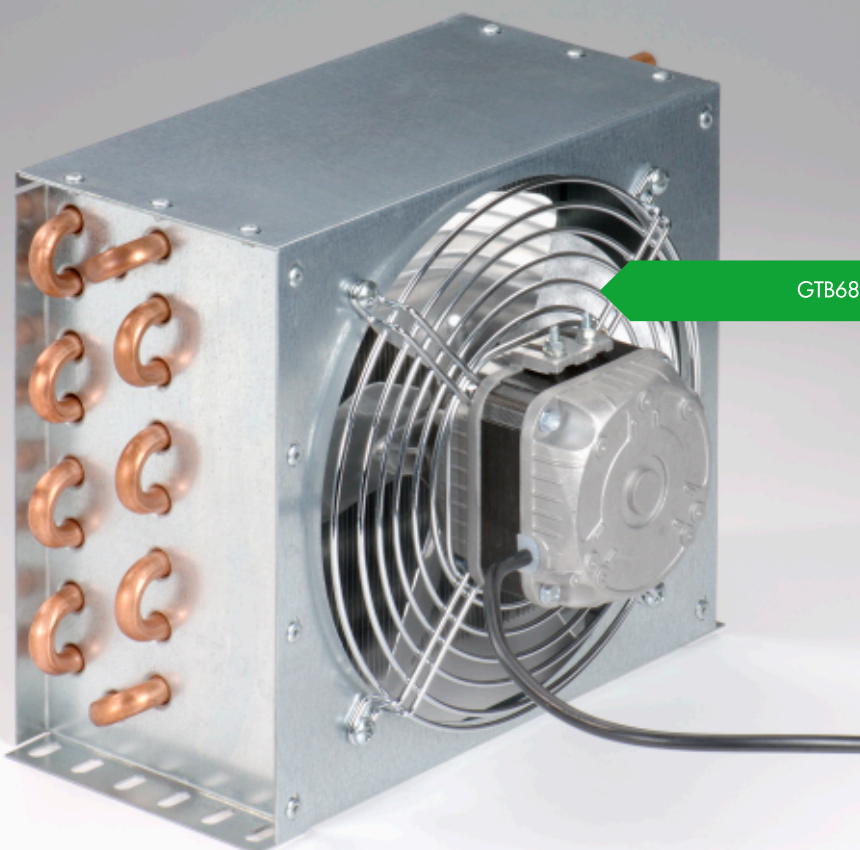
- Fan motor diameters 172, 200, 230, 254, 300 mm
- Single phase 230V/50Hz shaded pole motors
- Aluminium fan blades,
- Special versions EC, ATEX on request

CASING:

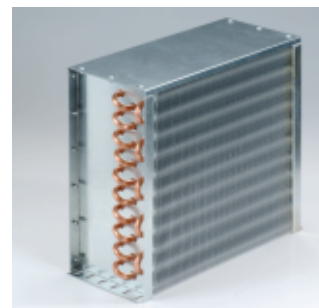
- Made of galvanized steel,
- As an option: powder coating, epoxy coating or cathodolysis



Dimensions



GTB680



Standard version



Non-service condenser

LOW CAPACITY CONDENSERS

MODEL	Capacity *		Air flow m ³ /h	Fans			Surface m ²	Weight kg	A	FTA	H1	FTB	L	SIM	FTC	Connection	Internal volume (dm ³)	
	W	No of fans		Diameter (mm)	Electric motor (W)	Consumption (A)											Cu 9.52x0.3	Cu6.35x0.23
GTB0570	570	1	280	1	172	5	1,1	2,7	190	243	190	203	110	63	173	8	0,16	0,10
GTB0680	680	1	250	1	172	5	1,66	3,1	200	243	190	203	130	63	193	8	0,18	0,10
GTB0750	750	1	250	1	172	5	1,7	3,2	200	243	190	203	130	63	193	8	0,25	0,15
GTB0860	860	1	440	1	200	10	1,47	3,5	220	273	209	228	110	67	177	8	0,2	0,13
GTB1000	1000	1	400	1	200	10	2,17	3,8	220	273	209	228	130	67	197	8	0,23	0,13
GTB1100	1100	1	400	1	200	10	2,22	3,9	220	273	209	228	130	67	197	8	0,33	0,19
GTB1270	1270	1	750	1	230	12	1,78	3,8	250	303	247	253	110	73	183	8	0,28	0,18
GTB1500	1500	1	690	1	230	12	2,73	4,1	250	303	247	253	130	73	203	8	0,28	0,18
GTB1650	1650	1	690	1	230	12	2,81	4,3	250	303	247	253	130	73	203	8	0,42	0,26
GTB1730	1730	1	740	1	254	16	3,37	5,4	280	333	266	278	130	76	206	8	0,34	0,21
GTB1900	1900	1	740	1	254	16	3,47	5,6	280	333	266	278	130	76	206	8	0,46	0,32
GTB2300	2300	1	1300	1	300	25	3,63	6,8	350	403	342	353	130	123	253	8	0,49	0,34
GTB2750	2750	1	1200	1	300	25	5,36	7,9	350	403	342	353	150	123	273	8	0,53	0,34
GTB3000	3000	1	1200	1	300	25	5,45	8,1	350	403	342	353	150	123	273	8	0,75	0,51
GTB0750.4	850	1	250	1	172	5	2	3,6	190	243	190	203	155	63	218	8	0,36	0,21
GTB1100.4	1250	1	400	1	200	10	2,7	4,3	220	273	209	228	155	67	222	8	0,43	0,26
GTB1650.4	1880	1	690	1	230	12	3,4	4,9	250	303	247	253	155	73	228	8	0,53	0,35
GTB1900.4	2150	1	740	1	254	16	4,1	6,3	280	333	266	278	155	76	231	8	0,68	0,42
GTB3000.4	3400	1	1200	1	300	25	6,6	8,5	350	403	342	353	175	123	273	8	0,98	0,68
GTB0570.D	1190	2	560	2	172	5	2	5,6	400	453	190	203	110	63	173	8	0,29	0,22
GTB0680.D	1360	2	500	2	172	5	2,4	6,1	400	453	190	203	130	63	193	8	0,34	0,22
GTB0750.D	1530	2	500	2	172	5	3,2	6,2	400	453	190	203	130	63	193	8	0,46	0,32
GTB0860.D	1760	2	880	2	200	10	2,98	6,9	460	513	209	228	110	67	177	8	0,38	0,27
GTB1000.D	1920	2	800	2	200	10	3,33	7,5	460	513	209	228	130	67	197	8	0,46	0,27
GTB1100.D	2140	2	800	2	200	10	4,51	7,7	460	513	209	228	130	67	197	8	0,61	0,40
GTB1270.D	2490	2	1500	2	230	12	3,3	7,7	520	573	247	253	110	73	183	8	0,48	0,37
GTB1500.D	2900	2	1380	2	230	12	3,7	8,3	520	573	247	253	130	73	203	8	0,54	0,37
GTB1650.D	3390	2	1380	2	230	12	5,2	8,6	520	573	247	253	130	73	203	8	0,78	0,53
GTB1730.D	3460	2	1480	2	254	16	4,5	10,8	580	633	266	278	130	76	206	8	0,71	0,44
GTB1900.D	3850	2	1480	2	254	16	6,2	11,1	580	633	266	278	130	76	206	8	0,98	0,66
GTB2300.D	4800	2	2600	2	300	25	6,6	13,5	720	773	342	353	130	123	253	8	1,02	0,70
GTB2750.D	5400	2	2400	2	300	25	7,2	14,6	720	773	342	353	150	123	273	8	1,02	0,70
GTB3000.D	6150	2	2400	2	300	25	7,2	15,1	720	773	342	353	150	123	273	8	1,02	1,05
GTB0750.D4	1740	2	500	2	172	5	4,4	3,6	400	453	190	203	155	63	218	8	0,63	0,43
GTB1100.D4	2500	2	800	2	200	10	6	4,3	460	513	209	228	155	67	222	8	0,77	0,55
GTB1650.D4	3800	2	1380	2	230	12	7,2	4,9	520	573	247	253	155	73	228	8	0,97	0,73
GTB1900.D4	4350	2	1480	2	254	16	8,9	6,3	580	633	266	278	155	76	231	8	1,19	0,88
GTB3000.D4	6900	2	2400	2	300	25	14	8,7	720	773	342	353	175	123	273	10	1,75	1,40

* dt=15K, R404A

CONDENSER SVR / SHR

FEATURES

COIL:

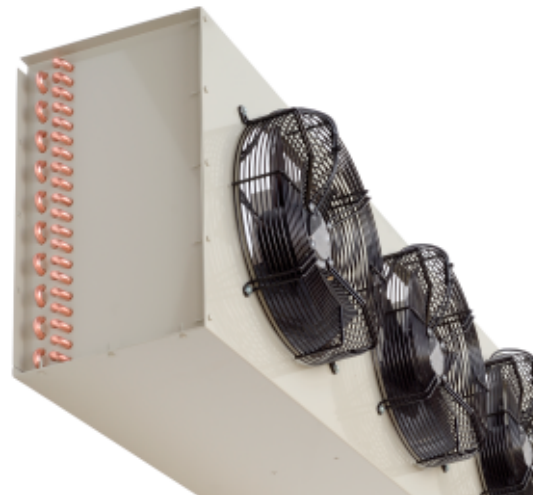
- Aluminium fins with fin spacing: 2,5 mm
- Copper tubes of diameter 9,52 mm;
- Tubes geometry: 25 mm x 21,65 mm.
- 2, 3, 4, 5 or 6 rows of tubes.

FANS:

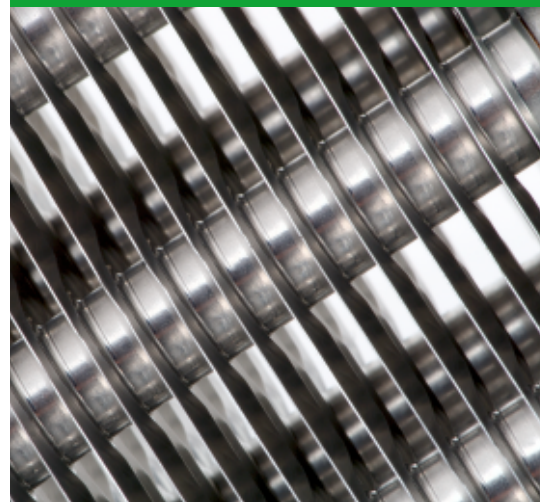
- From 1 to 5 fans of diameter 350, 450 or 500 mm,
- Fan power supply- 230V/1/50Hz; 220V/3/50Hz.
- As an option low noise fans or EC motors

CASING:

- Two types of frame depending on position of working: horizontal (SHR) or vertical (SVR),
- Made of galvanized steel, painted.



Condenser SVR



Fins

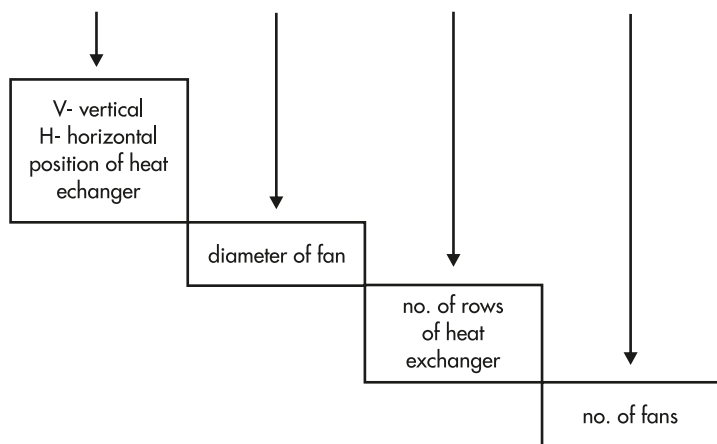


Condenser SHR

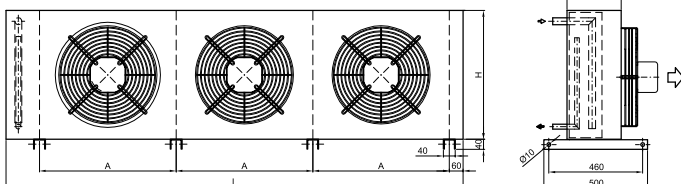


Tubes

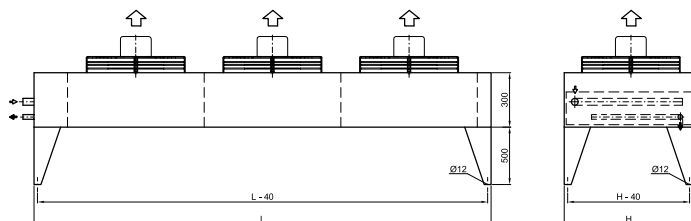
SVR - 350 - 4 - 2



SVR



SHR



Dimensions

CONDENSER SVR / SHR

MODEL	Capacity* [kW]	Air flow [m ³ /h]	Current [A]	Power input [kW]	Power supply [V/f/Hz]	Noise level [dB(A)]		Heat exchange surface [m ²]	Connections inlet/outlet [mm]	Fluid pressure drop [kPa]	Inner volume [dm ³]	Weight [kg]	Dimensions [mm]			
						10m	5m						H	L	A	
SVR-350-2-1	5,1	2500	0,58	0,13	230V/1/50Hz	45	52	8,1	16	12	3,8	1,6	13,1	520	620	500
SVR-350-3-1	7,2	2300						12,1	16	12	9,3	2,4	14,9			
SVR-350-4-1	8,8	2200						16,1	16	12	28,3	3,1	17,0			
SVR-350-5-1	9,6	2150						20,2	16	12	6,6	3,9	19,1			
SVR-350-6-1	10,0	2000						24,2	22	16	4,7	4,8	21,7			
SVR-350-2-2	10,5	5000	1,16	0,26	230V/1/50Hz	48	55	16,1	16	12	13,3	3,0	23,1	520	1120	500
SVR-350-3-2	14,2	4600						24,2	16	12	32,9	4,5	26,6			
SVR-350-4-2	17,2	4400						32,3	16	12	25,3	5,9	30,4			
SVR-350-5-2	19,4	4300						40,4	16	12	39,2	7,4	34,2			
SVR-350-6-2	20,5	4000						48,4	22	16	28,3	9,0	38,6			
SVR-350-2-3	15,4	7500	1,74	0,40	230V/1/50Hz	49	56	24,2	16	12	35,1	4,4	33,1	520	1620	500
SVR-350-3-3	20,9	6900						36,3	22	16	19,8	6,7	38,5			
SVR-350-4-3	25,3	6600						48,4	22	16	34,6	8,9	44,1			
SVR-350-5-3	28,8	6450						60,5	22	16	34,9	11,0	50,1			
SVR-350-6-3	30,3	6000						72,6	22	16	51,5	13,2	55,6			
SVR-350-2-4	20,3	10000	2,32	0,53	230V/1/50Hz	50	57	32,3	16	12	35,4	5,8	43,1	520	2120	500
SVR-350-3-4	27,5	9200						48,4	22	16	42,4	8,8	50,1			
SVR-350-4-4	33,3	8800						64,6	22	16	44,0	11,7	57,4			
SVR-350-5-4	38,0	8600						80,7	28	22	34,8	14,8	65,8			
SVR-350-6-4	40,2	8000						96,8	28	22	24,2	17,7	73,0			
SVR-350-2-5	25,4	12500	2,90	0,66	230V/1/50Hz	52	59	40,4	22	16	32,1	7,4	54,2	520	2620	500
SVR-350-3-5	34,3	11500						60,5	22	16	32,7	11,0	61,8			
SVR-350-4-5	41,5	11000						80,7	28	22	39,6	14,7	72,0			
SVR-350-5-5	47,1	10750						100,9	28	22	31,1	18,3	81,0			
SVR-350-6-5	50,0	10000						121,0	28	22	46,2	21,9	90,0			

MODEL	Capacity* [kW]	Air flow [m ³ /h]	Current [A]	Power input [kW]	Power supply [V/f/Hz]	Noise level [dB(A)]		Heat exchange surface [m ²]	Connections inlet/outlet [mm]	Fluid pressure drop [kPa]	Inner volume [dm ³]	Weight [kg]	Dimensions [mm]			
						10m	5m						H	L	A	
SVR-450-2-1	10,8	5100	1,55	0,35	230V/1/50Hz	48	55	16,3	16	12	39,8	3,1	21	740	840	700
SVR-450-3-1	14,9	4900						24,4	16	12	26,6	4,6	25			
SVR-450-4-1	18,0	4650						32,5	16	12	27,9	6,1	29			
SVR-450-5-1	20,2	4500						40,7	16	12	53,1	7,6	32			
SVR-450-6-1	21,8	4300						48,8	22	16	34,0	9,2	37			
SVR-450-2-2	20,9	10200	3,10	0,70	230V/1/50Hz	51	58	32,5	16	12	37,8	6,0	38	740	1580	700
SVR-450-3-2	28,9	9800						48,8	22	16	52,1	9,0	45			
SVR-450-4-2	35,0	9300						65,1	22	16	34,2	12,0	52			
SVR-450-5-2	39,6	9000						81,3	28	22	38,8	5,1	61			
SVR-450-6-2	42,3	8600						97,6	28	22	56,7	18,0	68			
SVR-450-2-3	30,5	15300	4,65	1,05	230V/1/50Hz	52	59	48,8	22	16	56,7	9,0	56	740	2300	700
SVR-450-3-3	42,6	14700						73,1	28	22	40,4	13,6	67			
SVR-450-4-3	51,3	13950						97,6	28	22	43,5	17,9	77			
SVR-450-5-3	58,3	13500						122,0	28	22	41,9	22,2	88			
SVR-450-6-3	63,1	12900						146,4	35	28	30,9	27,0	100			
SVR-450-2-4	41,6	20400	6,20	1,40	230V/1/50Hz	54	61	65,1	22	16	54,8	12,3	72	1500	1580	700
SVR-450-3-4	57,8	19600						97,6	28	22	34,2	18,6	86			
SVR-450-4-4	70,0	18600						130,0	35	28	29,2	25,2	102			
SVR-450-5-4	79,2	18000						162,8	35	28	32,4	31,0	115			
SVR-450-6-4	84,7	17200						195,2	35	28	52,2	36,8	129			

MODEL	Capacity* [kW]	Air flow [m ³ /h]	Current [A]	Power input [kW]	Power supply [V/f/Hz]	Noise level [dB(A)]		Heat exchange surface [m ²]	Connections inlet/outlet [mm]	Fluid pressure drop [kPa]	Inner volume [dm ³]	Weight [kg]	Dimensions [mm]			
						10m	5m						H	L	A	
SVR-500-2-1	16,1	8200	1,59	0,82	400V/3/50Hz	57	64	23,3	16	12	33,4	4,4	38	900	1000	850
SVR-500-3-1	22,6	8000						35,0	16	12	32,5	6,5	43			
SVR-500-4-1	27,6	7700						46,6	22	16	40,7	0,9	49			
SVR-500-5-1	31,1	7300						58,3	22	16	28,3	11,0	55			
SVR-500-6-1	33,7	7000						70,0	22	16	28,1	13,4	61			
SVR-500-2-2	31,2	16400	3,18	1,64	400V/3/50Hz	60	67	46,6	22	16	33,3	8,7	72	900	1880	850
SVR-500-3-2	43,9	16000						70,0	28	22	36,1	13,8	82			
SVR-500-4-2	53,8	15400						92,3	28	22	29,8	17,4	93			
SVR-500-5-2	60,6	14600						116,6	35	28	25,5	22,0	104			
SVR-500-6-2	65,4	14000						139,9	35	28	56,0	26,2	113			
SVR-500-2-3	46,6	24600	4,77	2,46	400V/3/50Hz	61	68	70,0	28	22	34,4	13,1	107	900	2730	850
SVR-500-3-3	65,5	24000						105,0	28	22	24,9	19,3	120			
SVR-500-4-3	80,1	23100						139,9	35	28	22,5	26,0	137			
SVR-500-5-3	89,8	21900						174,9	35	28	41,1	32,2	152			
SVR-500-6-3	97,6	21000						209,9	35	28	36,0	38,4	167			
SVR-500-2-4	62,3	32800	6,36	3,28	400V/3/50Hz	62	69	93,3	28	22	30,4	18,0	139	1780	1880	850
SVR-500-3-4	87,8	32000						139,9	35	28	20,7	27,3	160			
SVR-500-4-4	107,7	30800						186,6	35	28	25,3	35,7	179			
SVR-500-5-4	121,2	29200						233,2	42	35	26,3	45,3	201			
SVR-500-6-4	131,2	28000						279,9	42	35	46,9	53,5	220			

* dt=15K, R404A (tz=30°C, 45%)

NON-SERVICE CONDENSERS

NEW

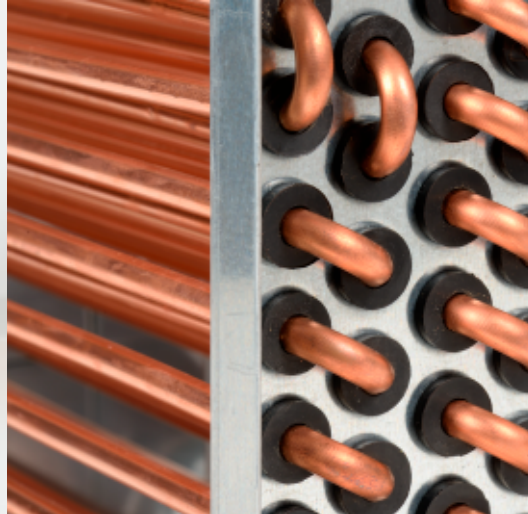
When you want to avoid problems with maintenance. Non-service heat exchangers dedicated to standard refrigerants and also to R290.



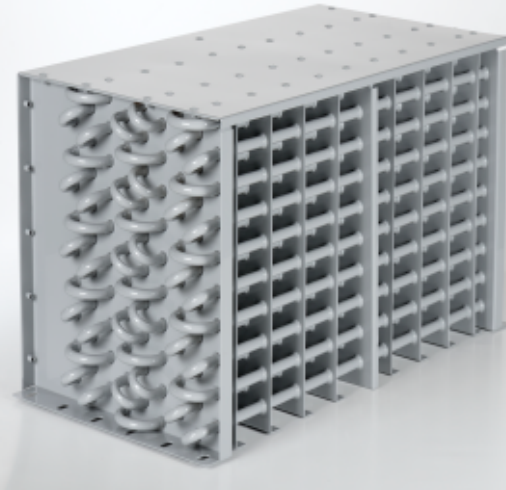
Cataphoresis protection



Condenser



Protection of copper tubes



Painted condenser

WIRE TUBE CONDENSERS AND EVAPORATORS

NEW

Solutions for all refrigerants including CO₂ and propane. All dimensions fitted to your needs.

FEATURES:

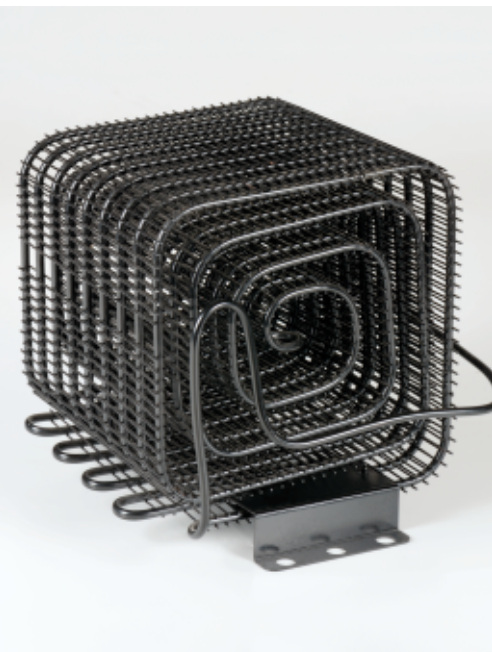
- Bundy tube 4,75 mm with wall thickness 0,7 mm
- Low carbon steel wire 1 mm - 1,6 mm
- Corrosion protection: cataphoresis or powder painting



Condenser

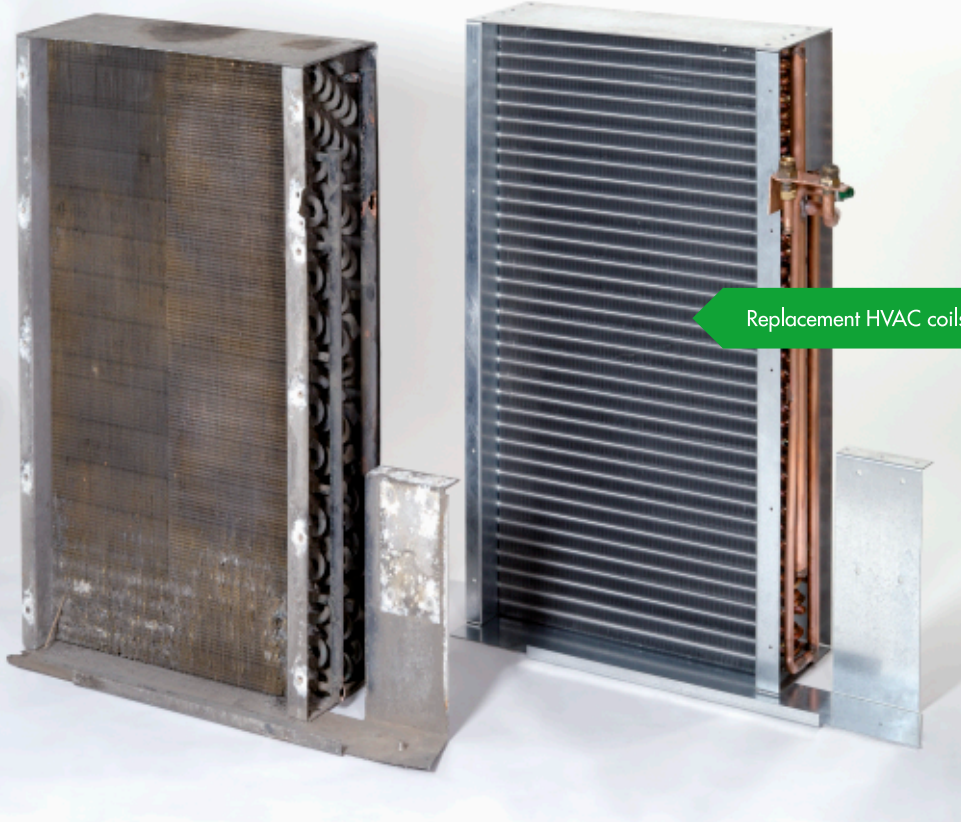


Condenser with casing



Condenser

REPLACEMENT & NONSTANDARD



When you need replacement HVAC coils, GTB matters. GTB coils specializes in manufacturing competitively-priced, replacement coils and OEM coils that always fit and are always on-time.



APPLICATIONS (COILS HEAT EXCHANGERS... ↘)

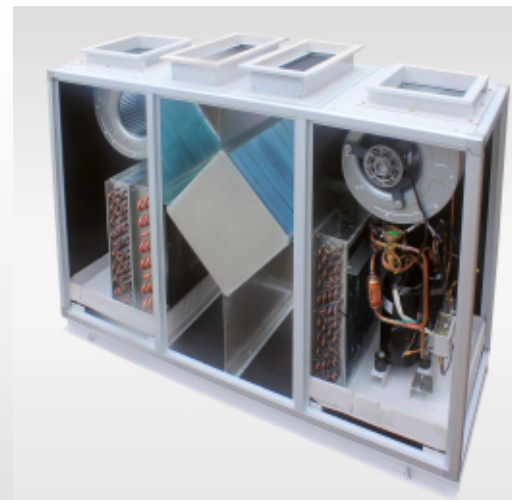
- Air conditioning
- Heat pumps
- Condensing units
- Transport refrigeration A/C
- Dehumidifiers
- Freezers, coolers, vending machines
- Frost-free refrigerators



Refrigerator with Monoblock



Refrigerated Display Case



Air Handling Unit

PRODUCTION PLANT



COILS

HEAT AND COOL FOR YOUR NEEDS

Our sophisticated technology and technical expertise help us to manufacture the products as per the specifications provided by our clients.

GTB
group

GTB GROUP, s.r.o.

Na Bařtici 350, 738 01 Staré Město, Frýdek-Místek, Czech republic
tel.: +420 558 442 320, +420 558 442 394, fax: +420 558 442 399, e-mail: export@gtb.cz

www.gtbgroupp.cz

PARTS FOR YOUR PRODUCTS